

SMMSi / SHRMi VRF Indoor Unit MMU-AP0121MH2UL - Compact 4-Way Cassette

TOSHIBA
Carrier

Submittal Data

Job Data _____ Location _____
 Buyer _____ Buyer PO # _____ Carrier # _____
 Unit Number _____ Model Number _____
 Performance Data Certified By _____ Date _____



SMMSi / SHRMi VRF Compact 4-Way Cassette Features

- R-410A Refrigerant
- Five sizes from 7,500 to 18,000 Btu/h
- Standard condensate pump with 24.7 in. lift capability
- Quiet operation, as low as 31 dBA
- Independent louver control (fixed or swing)
- Optional wired or wireless controls
- Auto or manually set three fan speeds
- Easy to remove cleanable filter
- Five-year parts limited warranty

Indoor Unit Model	MMU-AP0121MH2UL	
PERFORMANCE		
Cooling Rated Capacity	Btu/h	12,000
Heating Rated Capacity	Btu/h	13,500
Fan Type (Qty)		Turbo (1)
Airflow (L / M / H)	CFM	240 / 300 / 330
Sound Pressure (L / M / H)	dBA	32 / 36 / 40
ELECTRICAL		
Power Supply	V/Ph/Hz	208-230/1/60
Power Consumption (Input)	kW	0.038
Full Load Amps (FLA)	A	0.4
Minimum Circuit Amps	A	0.5
Maximum Overcurrent Protection	A	15
Motor Type	DC Inverter Driven	
Motor Watts		60

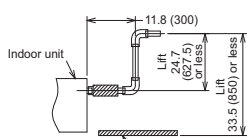
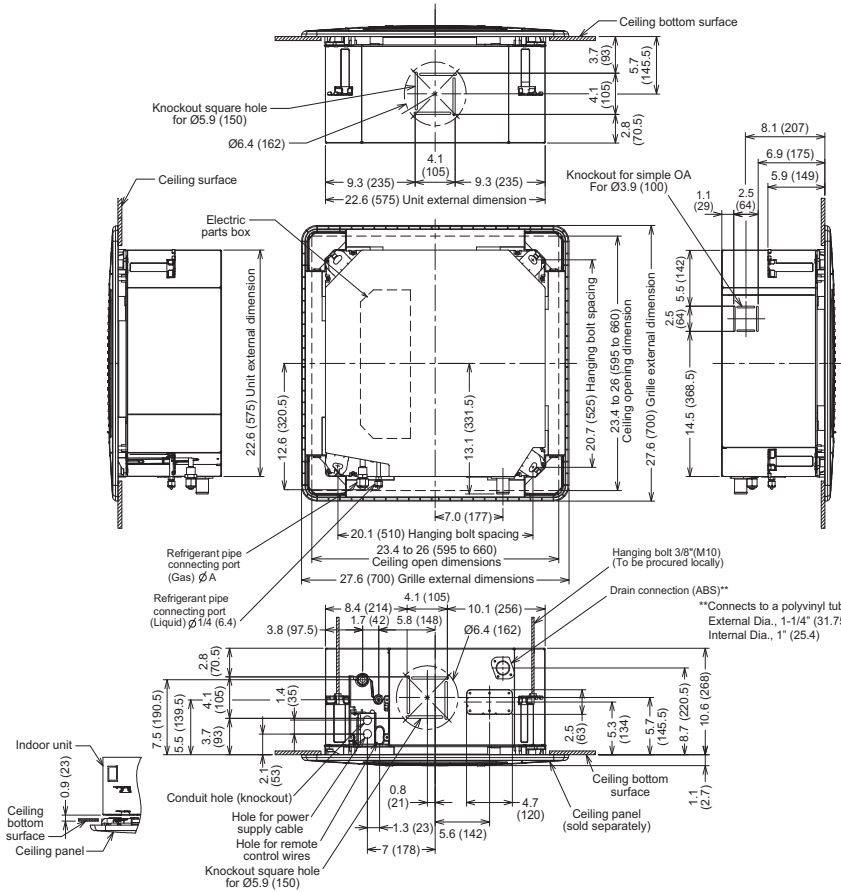
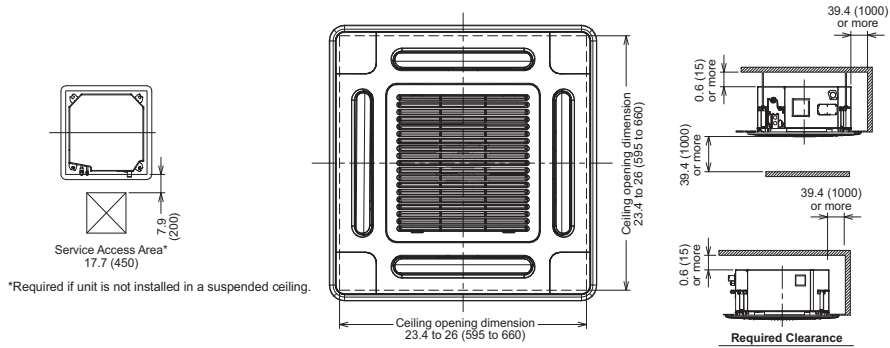
PHYSICAL DATA		
Pipe Connection Size - Liquid (High Pressure)	in.	1/4 (Flare)
Pipe Connection Size - Gas (Low Pressure)	in.	3/8 (Flare)
Pipe Connection Size - Drain (OD)	in.	1-1/4
Pipe Connection Size - Drain (ID)	in.	1
Refrigerant	R-410A	
External Finish	Munsell 2.5GY9.0/0.5	
Unit Width	in.	22-9/16
Unit Height	in.	10-9/16
Unit Depth	in.	22-9/16
Unit Net Weight	lb	35
Panel Width	in.	27-9/16
Panel Height	in.	1-1/8
Panel Depth	in.	27-9/16
Panel Net Weight	lb	7

ACCESSORIES (Optional)

- Lite Vision Plus Remote Controller (7-Day Programmable) RBC-AMS51E-ES
- Simple Wired Remote Control RBC-AS41UL
- Stand-Alone Receiver with Wireless Remote TCB-AX32UL
- Remote Sensor TCB-TC41LUL
- Wired Remote Controller RBC-AMT32UL
- Grille Panel RBC-UM11PG(W)-UL

Manufacturer reserves the right to discontinue, or change at any time, specifications or designs without notice and without incurring obligations.

DIMENSIONAL DRAWING INDOOR UNIT COMPACT 4-WAY CASSETTE MMU-AP0121MH2UL



NOTE: The drain connection is ABS. If the drain piping is PVC, the correct glue must be used.

Drain Connection

Refrigerant Connection Sizes

Model Size	A
MMU-	
AP012	Ø3/8" (9.5)

NOTE: All dimensions shown in inches (mm).

